

LEGACY
HEALTH

Legacy Mount Hood Medical Center

*Community Health
Needs Assessment*

and

*Community Health
Improvement Plan*

FY 2018



Mission

*Our legacy is good health for our people,
our patients, our communities, our world*

Vision

To be essential to the health of the region

Values

*Respect • Service • Quality • Excellence
Responsibility • Innovation • Leadership*



TABLE OF CONTENTS

Community Health Needs Assessment

Introduction 4

Purpose of CHNA report 6

Community Profile 7

Summary Legacy prioritized focus areas 9

Building on success: 2013 CHNA report. 10

Conclusion 12

Appendix A 12

References. 12

Community Health Improvement Plan

Executive Summary. 13

Introduction 14

Purpose of CHIP report. 14

Summary of prioritized focus areas

Prioritized focus areas and associated strategy plan 16

 Access to Care 16

 Behavioral Health 17

 Social Determinants of Health 18

Legacy Health Community Resources 20

Legacy Mount Hood Medical Center

COMMUNITY HEALTH NEEDS ASSESSMENT

Introduction

About Legacy Mount Hood Medical Center

Legacy Mount Hood Medical Center was founded in 1922 (formerly Gresham Community Hospital) and began serving Gresham and eastern Multnomah County (“East County”) at its current site in 1984. Today, Legacy Mount Hood is a member of Legacy Health, a six-hospital system established in 1989 by the merger of two nonprofit systems in the four-county metropolitan Portland, Oregon, area, and the addition of the more recent acquisition of Silverton Medical Center in Marion County to the south. The system’s mission is:

*Our legacy is good health for
our people, our patients,
our communities, our world.*

A full-service community hospital, Legacy Mount Hood offers the area’s most modern emergency department, outstanding imaging capabilities, a cardiac catheterization suite, complete cancer care, gastroenterology, a birthing center, and a range of other services that continue to expand to meet the needs of the growing community the medical center serves.

In addition, Legacy is part of a new collaborative providing psychiatric emergency services — Unity Center for Behavioral Health. Unity Center is a joint effort of Adventist Health, Kaiser Permanente, Oregon Health & Science University, and Legacy Health. It is the first collaborative medical initiative of its kind in the Pacific Northwest.

About the area we serve

Legacy Mount Hood Medical Center defines service area based on actual patient origin (ZIP codes) and geographic location. Legacy Mount Hood is located in Gresham, a suburban area about 25 miles east of downtown Portland. The total service area extends from the Columbia River in the north to Estacada in the south, and from S.E. 122nd Ave. in the west to Mt. Hood in the east. The primary service area includes the cities/towns of Gresham, Troutdale, Fairview, Corbett and Wood Village. ZIP codes include 97009, 97010, 97011, 97019, 97022, 97024, 97028, 97030, 97049, 97055, 97060, 97067 and 97080.

The Legacy Mount Hood primary service area included approximately 115,000 residents during this reporting period, with an estimated with 5.85 percent growth projected by 2018. Multnomah County’s certified population estimate as of July 1, 2017, was 803,000, a 1.6 percent increase over the prior year.¹ Multnomah County represented 35.5 percent of the four-county population and 19.5 percent of Oregon’s 3,930,065 residents in 2013.

By ethnicity and race, the Legacy Mount Hood primary service area is 73.6 percent non-Hispanic white, 15.7 percent Hispanic, 2.1 percent African-American, 4.4 percent Asian and Pacific Islander, 3.6 percent multi-racial, .1 percent other race and .7 percent Native American.

As home prices and rental costs in Portland have increased significantly in the past decade, communities of color have sought housing in the surrounding communities, often moving east. A number of the elementary schools in the East County area have a 50 percent Hispanic student population. The African-American/Black population continues to be most concentrated in the historical neighborhoods of North/Northeast Portland, but increased housing prices have resulted in the community moving increasingly to East Multnomah County.

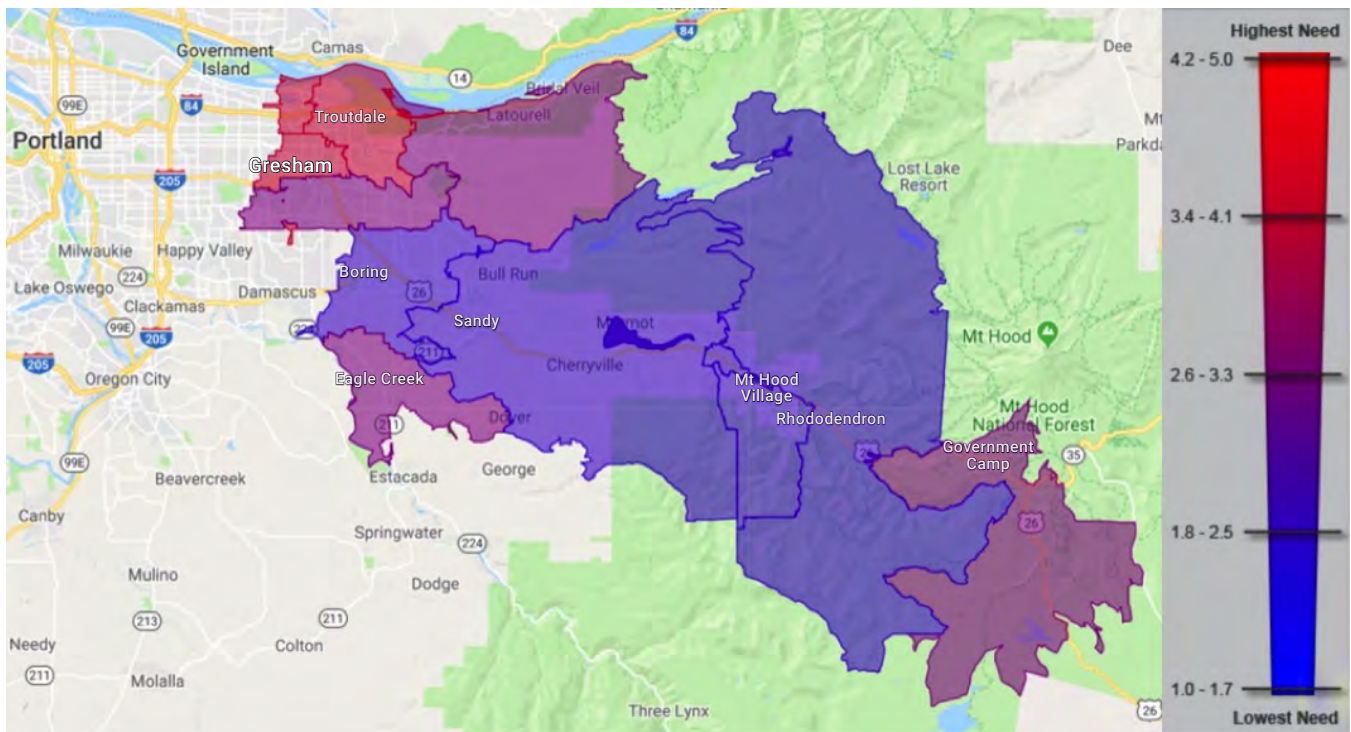
Multnomah County's median household income (MHI) averaged for the years 2008-2012 was \$51,582, with 17.1 percent of the population living below poverty. In Multnomah County, the non-Hispanic white median household income was \$55,346 compared to Asian at \$54,561, Hispanic/Latino at \$36,572, American Indian/Alaska Native at \$29,695 and Black/African-American at \$27,347. Families living below poverty level included non-Hispanic whites at 7.9 percent relative to Asians at 12.6 percent, multiracial families at 19.6 percent, Black/African Americans at 32.6 percent, Hispanics/Latinos at 30.7 percent and American Indians/Alaska Natives at 35.5 percent.

A sampling of three school districts in the service area show the non-Hispanic white cohort to have a high school graduation rate significantly higher than Hispanic and African-American/Black students. See table below.

With the increase in diversity and decreasing family incomes in the area, safety net services have expanded and emerged, including:

- Multnomah County Health Department operates federally qualified health centers (FQHCs) in inner Gresham and Rockwood.
- The Wallace Medical Concern, formerly a volunteer-staffed safety net clinic, obtained FQHC status and has two locations in East Multnomah County.
- NARA Wellness Center (Native American Rehabilitation Association) FQHC, provides integrated care at their east Burnside location.
- Legacy Medical Group–Sandy — 13 miles from the hospital — is a designated Rural Health Center.

School district	All	Non-Hispanic White	African American/ Black	Hispanic	Asian Pacific Islander	Native American
Gresham Barlow	72.0 percent	74.5 percent	50.0 percent	60.3 percent	80.8 percent	90.9 percent
Centennial	65.4 percent	71.5 percent	50.0 percent	48.1 percent	72.9 percent	25.0 percent
Reynolds	54.8 percent	57.6 percent	54.2 percent	42.9 percent	78.0 percent	75.0 percent



The Dignity Health and Truven Health Community Needs Index (CNI) is accepted as the national standard in identifying communities with health disparities and comparing relative need. CNI for the Legacy Mount Hood primary service area shows (on a scale of 1/low need to 5/high need) areas of highest need in 97024-Fairview, 97030-Central Gresham and 97236-Powell Butte. Notably one of the highest-need communities is adjacent to Legacy Mount Hood, 97233-Rockwood. One-fourth of the census tracts Rockwood as a Medically Underserved Population (MUA) designation with an uninsured population of 30 percent.²

About this report

The purpose of this report

The Patient Protection and Affordable Care Act (ACA), IRS Section 501(r)(3), requires tax-exempt hospital facilities like ours to conduct a Community Health Needs Assessment (CHNA) at least once every three years. This report is approved by the Legacy Health Board of Directors and made available to the public in compliance with the IRS requirements.

The purpose of the CHNA is to:

- Determine the priority factors influencing the health of the community we serve
- Identify the needs and gaps affecting the health status of various populations within this community
- Identify how our organization's resources and expertise can help address these issues

This report summarizes the findings of a regional community health needs assessment completed July 31, 2016 (Appendix A). The next section explains how this regional CHNA came about.

A collaborative approach to assessing our community's needs

Prior to 2010, each of the metro area hospitals/health systems and public health departments in Clackamas, Multnomah and Washington counties in Oregon, and Clark County in Washington, had conducted community health needs assessments independently. This was a significant duplication of efforts and resources since the organizations were, for the most part, serving (and assessing) the same community.

To reduce this duplication of effort and streamline the process of meeting the ACA's triennial CHNA requirements, these entities joined forces to establish the Healthy Columbia Willamette Collaborative (HCWC). This public-private partnership brings together 15 hospitals, four counties and two coordinated care organizations (CCOs, or managed Medicaid organizations) to produce a shared regional needs assessment. The HCWC produced its first regional CHNA in 2013, and the second — on which this report is based — in 2016.

This report draws on the regional CHNA findings specifically for Multnomah County, which includes the primary service area for Legacy Mount Hood Medical Center.

How information was gathered

The HCWC identified community health needs through a comprehensive study of population, hospital, Medicaid and community data. This included:

- Population data about health-related behaviors, morbidity (the rate of disease in a population) and mortality (the frequency of death in a certain population)
- Medicaid data from local CCOs about the most frequent conditions for which individuals on Medicaid sought care in our service area
- Hospital data for uninsured people who were seen in the emergency department with a condition that could have been managed in primary or ambulatory care
- An online survey about quality of life, issues affecting community health, and risky health behaviors
- Listening sessions with diverse communities in the region to identify community members' vision for a healthy community, needs in the community, and existing strengths
- An inventory of recent community engagement projects in the region that assess communities' health needs

More detailed information on these sources of information can be found beginning on page 8 of the Healthy Columbia Willamette Collaborative CHNA Reports (Appendix A).

What we learned from our community health needs assessment

By the numbers: A data snapshot of the community we serve

Here are some of the notable findings about the community Legacy Mount Hood serves — and its health status — revealed by the CHNA data compiled by the HCWC (and other sources, if applicable):

Population

- Multnomah County's certified population estimate as of July 1, 2017, was 803,000, a 1.6 percent increase over the prior year.¹
- The City of Portland is home to 79 percent of the county's population. East Multnomah County also includes the City of Gresham, which is home to around 109,000 people.
- Multnomah County is the most populous of Oregon's 36 counties.³

Race and ethnicity

Although the racial and ethnic population of Multnomah County is predominantly white, non-Hispanic/Latino, the demographics of the county continue to diversify:

- The foreign-born population in Multnomah County accounted for 14.2 percent of the county's population in 2014, an increase of 19.3 percent since 2005
- The Hispanic/Latino population increased 61.6 percent from 2000 to 2010 — a higher rate than any other racial/ethnic group, but the smallest increase of the four counties
- By ethnicity and race, the Legacy Mount Hood primary service area is 73.6 percent non-Hispanic white, 15.7 percent Hispanic, 2.1 percent African American, 4.4 percent Asian and Pacific Islander, 3.6 percent multi-racial, .1 percent other race and .7 percent Native American.

Social determinants of health

While our health is influenced by our biology, genetics, and individual behavior, external factors are also important, such as our income/economic stability, where we live, how much education we

have, and our access to healthcare/the availability of providers. These factors are called “social determinants of health.” In Multnomah County, the CHNA revealed:

- Multnomah County had the lowest median household income in the four-county region (\$53,660).
- Approximately 19 percent of individuals were living in poverty in Multnomah County in 2014 (the highest rate in the region), including 24.4 percent of children 18 years or younger.
- Over 20 percent of households received Supplemental Nutrition Assistance Program (SNAP) benefits in the past year, the greatest proportion of families among the four counties studied.
- People receiving Medicaid, whose incomes are below 139 percent of the federal poverty level, make up 26 percent of the population in Multnomah County, the highest percentage in the region.
- Multnomah County residents have been affected by increased housing costs and growing rates of homelessness, which are highest in the four-county region.
- There is a higher percentage (42.4 percent) of substandard housing units compared to neighboring counties.
- 91 percent of residents have at least a high school diploma and 41.6 percent have at least a four-year college degree.
- At 725:1, Multnomah County has the highest ratio of population to primary care providers of the four counties.
- At 159:1, Multnomah County also has the highest ratio of population to mental health care providers of the four counties.

Health behaviors

Population health data from state surveys show that certain risky health behaviors are prevalent in Multnomah County. Notably:

- Access to health care was identified as a priority health issue for adults, specifically lack of access to preventive services. e.g., flu shots or pneumonia vaccines, lack of dental care, and lack of a usual source of health care.

- Binge drinking, cigarette smoking, and not eating enough healthy foods were identified as top risky behaviors among all age groups
- For teenagers specifically, the CHNA identified lack of exercise, alcohol use, and marijuana use as common behaviors.

Chronic health conditions among low-income residents:

By analyzing Medicaid claims data from local CCOs, the CHNA showed that:

- Among youth, asthma, attention deficit disorder, and post-traumatic stress disorder (PTSD) were the most commonly diagnosed chronic conditions.
- Among adults on Medicaid in Oregon, depression, diabetes, and hypertension were the most common diagnoses.

Emergency department admissions among uninsured residents

People without health insurance tend to rely on the hospital emergency department for care, including for conditions that could have been treated by a primary care provider. By analyzing utilization data from local hospitals for this patient population, the HCWC learned:

- The most common conditions for which uninsured adults sought ED care were diabetes, hypertension (high blood pressure), skin infections, and kidney/urinary infections
- For youth, the top conditions were asthma and severe ear, nose and throat infections

Morbidity and mortality

Epidemiologists from the four county health departments looked at over 100 health indicators, with several emerging as priority health issues affecting residents in Multnomah County. These included:

- Obesity — 54 percent of adults are overweight or obese, as are about a quarter of 8th and 11th graders.
- Mental health — Nearly 25 percent of adults (one in four) suffer from depression, and suicide is one of the top causes of death in the county.
- Substance use/abuse — Alcohol and drug use rank among the top causes of mortality.

What the community identifies as their health needs

Through an online survey, listening sessions, and an inventory of community engagement projects, the HCWC heard directly from community members about what they see as priority health issues or problems, and what contributes to these problems. The top five issues they identified were:

- Homelessness and the lack of safe, affordable housing
- Unemployment and lack of living-wage jobs
- Mental and behavioral health challenges
- Hunger and lack of healthy, affordable food
- Lack of access to physical, mental and/or oral health care

The priority health issues facing the community we serve

When all this data from the various assessment approaches was compiled, some specific health issues were identified in more than one assessment component, e.g., population, community engagement, emergency department or Medicaid data. These common themes emerge as the priority health issues facing the community we serve:

- Access to health care
- No usual source of health care among adults
- Asthma in low-income and uninsured children
- Depression in adults
- Diabetes and hypertension in adults
- Cancer (breast, colorectal and lung)
- Lack of dental visits for adults

What Legacy Mount Hood is doing to address these issues

Priorities: Where Legacy Mount Hood focuses its community benefit resources

Each year, Legacy Mount Hood invests a significant amount of goods, services, and funds to benefit the health of the community we serve, particularly health services for the low income and uninsured.

Consistent with our mission of good health for our community, in FY 17 Legacy Health's community benefit totaled \$383.1 million in FY 2017, and unreimbursed costs were \$360.3 million. Of this, Legacy Mount Hood's total community benefit was \$25.7 million, including unreimbursed costs of \$25 million.

Our aim in making community benefits investments is fourfold:

- To influence the things we can, such as health behaviors and social determinants of health
- To prevent and/or treat specific health problems
- To support existing programs and initiatives in the community that are effective in addressing specific health needs
- To help build programs and services that achieve our shared vision for a healthy community

Based on the findings of the HCWC's 2016 regional community health needs assessment, and how we can best apply our resources and expertise to help address these needs, Legacy Mount Hood is focusing its efforts on these priority issues:

Access to care

Improving residents' ability to get the health care services they need, with an emphasis on primary/preventive care and management of chronic conditions such as asthma in children, and diabetes and hypertension in adults

Behavioral health

Expanding the availability of and access to behavioral and mental health services for youth and adults to help address such conditions as depression, suicide and PTSD

Social determinants of health

Addressing the need for policies, systems, services and environments that support healthy behaviors, which means advancing solutions for such issues as homelessness and affordable housing for the underserved, food scarcity and, once again, access to health care. Education, meaningful employment, and removing barriers to culturally competent services are key to improving the health of the community.

Details on the specific initiatives Legacy Mount Hood is undertaking to address these priority issues can be found in our Community Health Improvement Plan (CHIP), which is provided in a separate document following this report.

Building on success: What we've done since the 2013 CHNA

In Legacy Mount Hood's previous CHNA, we identified access to health care, chronic disease, mental health, substance use disorder, health literacy and education and youth as our CHNA priorities. Since this last report, we have invested time, resources and funding in programs and services we believed would have an impact on these needs.

A \$10 million Community Health Fund was established in 1998 by the Legacy Health Board. The funding is supported by operating revenue on an annual basis. Every partner organization receiving funding meets the needs identified in the CHNA.

The table on page 11 has some highlights of what we've achieved.

Health care services for the low income and uninsured

While the Affordable Care Act has significantly lowered the uninsured rate in Oregon, longstanding income disparities in the Legacy Mount Hood service area underscore the ongoing need for safety net services, which are detailed in the separate CHIP document following this report.

Here are some highlights of what we've achieved

Organization	Program supported	Outcomes	Alignment
Project Access NOW	Outreach, enrollment and access, premium assistance (ongoing program support)	Donated care in 2017 provided for over 20,000 patients, assistance with enrolling 30,000 individuals of which 1,200 received premium and out-of-pocket support and 40,000 prescriptions were filled at no cost to patients	Access to care
Central City Concern	Housing is Healthcare	Once complete, project will provide for 379 individuals and families to have access to housing and other health and support services	Access to care
Transition Projects	Access to housing and services	Over 10,000 individuals served annually	Access to care
Rose Haven	Program support	In 2015, Rose Haven provided services to 2,935 women and children affected by domestic violence and homelessness (292 percent increase from 2009)	Access to care
Mental Health Association	Peer support	In year one of support, 43 patients were provided services, 23 of those patients were provided 57 referrals to community resources (housing/shelter, alcohol and drug, food, clothing, financial assistance), with more than 167 contacts by the Peer Support Specialists	Mental health
Lifeworks NW	Campaign for Project Network	Opening of LEED-certified 36-bed Project Network residential drug and alcohol treatment facility in N.E. Portland to assist women disrupt a cycle of addiction and abuse, for mothers by limiting financial interruptions and future foster care placement of their at-risk children	Substance use disorder
Latino Network	School and community-based programs	35 school locations, serving 631 students and families annually	Youth and education
Wallace Medical Concern	Increasing health literacy via community collaborations	In 2014–2015 WMC served 7,818 people total with 18,514 visits (21 percent increase over previous year)	Health literacy
Health Literacy Conference	Health literacy	Over 500 individuals reached annually from over 120 community and health organizations	Health literacy
North by Northeast Community Health Center	Blood pressure checks	Provides early awareness for cardiovascular health issues and connects individuals to health care services	Chronic disease
Various community partners	Food programs	From April 2014 to March 2017, Legacy Health's contributions through cash in-kind dollars and food drives accounted for 308,923 total meals provided to our community	Chronic disease

Conclusion

As you'll see in the Community Health Improvement Plan that follows this report, going forward we plan to sustain our efforts in addressing many of the priority issues to which we have devoted resources in the past because these needs still exist — as affirmed by the findings of our latest regional CHNA.

At Legacy Mount Hood, our top priority has been — and continues to be — a focus on the issues that have the greatest impact on the health of our community.

If you have any questions or wish to obtain a copy of this needs assessment, please email us at:

CommunityBenefit@lhs.org.

Appendix A

Healthy Columbia Willamette Collaborative CHNA Reports, 2016. Healthy Columbia Willamette Collaborative Community Needs Assessment Report can be found at: <http://www.qcorp.org/sites/qcorp/files/HCWC%202016%20Community%20Health%20Needs%20Assessment.pdf>.

References

¹Portland State University: *Populations Estimates and Report*. (2017) <https://www.pdx.edu/prc/population-reports-estimates>

²Dignity Health: *Community Need Index*. <http://cni.chw-interactive.org/>

³Statisticalatlas: *Population of Multnomah County, Oregon*. <https://statisticalatlas.com/county/Oregon/Multnomah-County/Population>

Legacy Mount Hood Medical Center

COMMUNITY HEALTH IMPROVEMENT PLAN

Executive summary

This Community Health Improvement Plan is based on the 2016 Community Health Needs Assessment (CHNA) conducted by the Healthy Columbia Willamette Collaborative (HCWC). The HCWC is a public-private partnership which unites 15 hospitals, four counties and two coordinated care organizations (CCOs, or managed Medicaid organizations) to produce a shared regional needs assessment. The region supported by the HCWC include Clackamas, Multnomah and Washington counties in Oregon, and Clark County in Washington. The HCWC produced its first regional CHNA in 2013, and the second — on which this report is based — in 2016.

Tied to our mission of improving the health of the community, this improvement plan is intended to guide Legacy Mount Hood's community-focused work, including investments and community health efforts based on prioritized health needs identified in the CHNA. This plan is focused on the Multnomah County area, as that is the primary service area for Legacy Mount Hood. Each prioritized focus area is aligned with strategies and indicators for measuring outcomes.

The strategies and outcomes will be assessed annually and revised as needed to address community needs. Legacy Mount Hood believes that multi-year sustainable partnerships with the community have strong potential to impact long-term health status. Therefore, the Legacy Mount Hood CHIP includes both continued effective strategies as well as new strategies. This plan is not intended to be an exhaustive listing of all our efforts to address community needs, but rather an overview of prioritized focus areas and strategies tied to measurable tactics.

Summary of prioritized focus areas

The 2016 HCWC Community Health Needs Assessment identified numerous health-related needs across the four-county region. Legacy Mount Hood has grouped the needs of Multnomah County into three categories:

Access to Care

- Primary care access
- Culturally appropriate care
- Health coverage programs

Behavioral Health

- Behavioral health providers, services
- Awareness, education and availability of services
- Early intervention of care
- Navigation to services post-discharge
- Prevention of Adverse Childhood Experiences (ACEs)

Social Determinants of Health

- Access to healthy food
- Improving health literacy
- Affordable housing
- Meaningful employment

These prioritized focus areas will be address through community partnerships and initiatives tied to the strategies outlined in the following plan.

Introduction

Our vision at Legacy Health is to be essential to the health of the region, and our mission is “Our legacy is good health for our people, our communities, our world.” Legacy Health remains committed to our mission and fulfills its commitment to the community through its partnerships and community investments. Legacy formally participates in the development of a Community Health Needs Assessment (CHNA) as part of the Healthy Columbia Willamette Collaborative (HCWC).

The CHNA is conducted in accordance with the Patient Protection and Affordable Care Act (ACA), IRS Section 501(r)(3), which requires tax-exempt hospital facilities like ours to conduct a CHNA once every three years. The CHNA is approved by the Legacy Health Board of Directors and made available to the public in compliance with the IRS requirements.

About Legacy Health

Legacy Health is a local, nonprofit health system with six hospitals and dedicated children’s care offered at Randall Children’s Hospital at Legacy Emanuel. Legacy also includes more than 70 primary care, specialty and urgent care clinics, as well as almost 3,000 providers who are either employed, on the medical staff or part of Legacy Health Partners. We have lab, research and hospice services. Among our major partnerships are PacificSource Health Plans and the Unity Center for Behavioral Health.

Legacy Health employs more than 13,000 people across its two-state region and focuses its resources on caring for those in our communities, especially marginalized individuals in need. In fiscal year 2017 Legacy provided \$383.2 million in community benefit across our five county-region (Multnomah, Clackamas, Washington, Marion and Clark counties) representing 20.7 percent of net patient revenue.

Purpose of Community Health Improvement Plan

The Community Health Improvement Plan (CHIP) is based on the 2016 Community Health Needs Assessment (CHNA) conducted by the Healthy Columbia Willamette Collaborative (HCWC). The CHIP serves to:

- Prioritize factors influencing the health of the communities we serve
- Define the strategies employed to address the needs and gaps affecting the health status of various populations within this community
- Identify how our organization will apply resources and expertise to these strategies, and how we will measure the outcome of the strategies

The CHIP is designed to align Legacy Mount Hood resources with community need. It is the roadmap Legacy Mount Hood will follow for the next three years, adapting to changing needs and opportunities along the way. Many of the strategies are a continuation of current work and investments, as we are committed to long-term dedication of resources which can build sustainable solutions.

The HCWC report, completed in the summer of 2016, documents the community health needs of the four-county region and each county individually. Priority health issues were identified based upon data collected including:

- **Population data** about health-related behaviors, morbidity and mortality
- **Medicaid data** from local Coordinated Care Organizations (CCOs) about chronic conditions for adults and youth
- **Hospital data** for uninsured individuals seen in emergency departments for conditions which should have been managed in a more appropriate care setting, e.g., primary care)
- **Quality of life data** from an online survey of 3,167 respondents; questions addressed issues affecting community health and risky health behaviors
- **Listening sessions** with 29 community-based organizations including 364 total participants to assess community needs and existing strengths

- **Inventory** of community engagement projects to assess community health needs

The three priority areas Legacy Health identified as those we can impact most significantly are: access to care, behavioral health and the social determinants of health.

Access to Care

Access to health care and preventive services are critical to improving the health of the community. Community members indicated the lack of a usual source of primary care, especially among adults, which disrupts continuity of care. For those individuals who do not qualify for Medicaid, but who cannot afford basic health care, assistance with insurance premiums is needed. Additionally, individuals are more likely to seek care when it is delivered in a culturally responsive and sensitive manner.

Behavioral Health

Behavioral health care access, early interventions and navigation to needed services post-discharge from a health facility were identified as lacking in our region. The awareness and education to support acknowledgement and acceptance of behavioral health challenges among adults and youth were noted as needed in the community. These actions can help to eliminate discrimination and stigmas attached to behavioral health challenges. For youth, identifying and addressing adverse childhood experiences (ACEs) can improve access and reduce risk factors, e.g., suicidal ideation, depression, gang involvement.

Social Determinants of Health

Basic needs, such as access to food, safe and affordable housing, pathways to living-wage jobs and youth education, when addressed, can change the course of an individual's life. Delivering health care and services in a culturally and linguistically appropriate manner, increase access and the ability for independence.

Summary of prioritized focus areas, strategies and key indicators

Access to Care

Priority needs

Primary care access

- Legacy Health will continue to support community-based clinics and organizations serving providing primary care services (including care for chronic conditions) for low income and uninsured individuals
- Provide in-kind lab services for clinics providing primary care services

Culturally appropriate care

- Improve health outcomes and quality of care by supporting community organizations that meet social, cultural and linguistic needs of patients in our community as well as reduce racial and ethical health disparities.

Health coverage programs

- Support programs working to ensure all individuals have access to health coverage and assistance with premium pay for low income and uninsured residents

Community Resources

Access to Care community resources:

Basic Rights Oregon
 Familias en Acción
 Outside In
 Project Access NOW
 Q Center
 The Wallace Medical Concern

Action plan	Indicators
Provide funding and/or other resources, e.g., in-kind laboratory services, board representation, program alignment and partnerships, IS support, to local FQHC and volunteer-staffed community-based clinics and culturally specific health service organizations	Number of services, hours and support provided to community-based organizations
Improve access to care through funded FQHC/safety net/community clinics that offer primary care services (and care for chronic conditions)	Number of low-income partner organizations patients with access to community-based primary care
Partner with Project Access NOW to increase insurance enrollment and access to care for low income and uninsured individuals who qualify for their Premium Assistance support and Outreach, Enrollment, and Access programs	Number of eligible under 200 percent of FPL individuals obtaining health care/Number of Project Access NOW premium assistance insured enrollees
Support Basic Rights Oregon, Q Center and other organizations in efforts to reduce disparities that stem from structural and legal factors, social discrimination and lack of culturally competent health care	Number of interactions from patient referrals to culturally competent services

Summary of prioritized focus areas, strategies and key indicators

Behavioral Health

Priority needs

Behavioral health providers, services

- Awareness, education and availability of services
- Build capacity in community-based behavioral health organizations and collaborate with regional initiatives

Early intervention of care

- Early identification, diagnosis and treatment of behavioral health issues can help children reach their full potential.
- Provide funding to community organizations and programs that support provide behavioral health screenings that identify patients with possible behavioral health (or substance use) disorders and provide guidance for referral for specialized health treatment

Navigation to services post-discharge

- Legacy Health will partner with behavioral health organizations to provide navigation for post-discharge support services

Prevention of Adverse Childhood Experiences (ACEs)

- Partner with organizations supporting individuals experiencing the trauma of disruptive life challenges

to reduce the likelihood Adverse Childhood Experiences (ACEs) in children/youth and reduce the likelihood of poor health implications that children and adults face relating to their trauma experiences

Community resources

Behavioral Health community resources:

Albertina Kerr
 Basic Rights Oregon
 Bradley Angle
 Cascadia Behavioral Health
 De Paul Treatment Center
 FolkTime
 Lifeworks NW
 Mental Health Association of Oregon
 NAMI Multnomah
 NAMI Oregon
 Native American Rehabilitation Association
 New Avenues for Youth
 NorthStar
 Rose Haven
 Trillium Family Services

Action plan	Indicators
Legacy Health commits to supporting New Avenues for Youth as well as similar programs that are designed to recognize and address early signs of behavioral health issues, and refer more severe, chronic mental health issues to more extensive therapy	Number of youth reached by therapist and staff trained to recognize early signs of behavioral health issues, and those referred to more extensive therapy
Provide funding to community organizations and programs that provide behavioral health screenings that identify patients with possible behavioral health (or substance use) disorders and give guidance for referral for specialized health treatment	Number of individuals referred and/or recognized with behavioral health issues
Support accessibility and affordability to behavioral health treatment and coordination of services	Number of low-income uninsured with access to services. Number of County Health Rankings for poor mental health days

Summary of prioritized focus areas, strategies and key indicators

Social Determinants of Health

Priority needs

Access to healthy food

- Partner with food programs to improve access to healthy meals

Improving health literacy

- Increase health literacy education in community
- Provide regional leadership in health literacy with the goal of improving health outcomes for people with limited health literacy. Continue to host an annual regional health literacy conference and program support to community-based, health system, public sector, and academic organizations

Affordable housing

- Support community-based recuperative care programs (housing and support services) post-discharge for homeless and other individuals in need of support services and housing insecurities

Meaningful employment

- Support youth employment opportunities designed to improve career development and access to living-wage jobs
- Offer college scholarships and paid summer work experience to [communities of color] for students entering health care careers
- Build capacity in youth development and education programs that increase graduation rates and access/opportunity for higher education achievement
- Support programs that reduce poverty-related barriers to educational success and build capacity for economic stability

Community Resources

Social Determinants of Health community resources

Basic Rights Oregon
Birch Community Services
Coalition of Communities of Color
Familias en Acción
Girls on the Run-Portland Metro
"I Have a Dream" Oregon
Latino Network
Meals on Wheels People
MIKE Program
My Father's House
Native American Youth and Family Center
New Avenues for Youth
Oregon Association of Minority Entrepreneurs
Oregon Community Warehouse
Oregon Latino Health Coalition
Oregon Health Care Interpreters Association
Oregon Public Health Institute
Outside In
Partners for a Hunger Free Oregon
Partners in Diversity
Project Access NOW
Sandy Community Action Center
SnowCap
Transition Projects

Action plan	Indicators
Legacy Health will continue to support food banks and programs that provide food to individuals struggling with food insecurities	Number of meals served by cash donations and food drive donations
Community health literacy education via regional health literacy conference and program support to community-based, health system, public sector, and academic organizations working on projects focused on improved health literacy	Number of community organizations and individuals reached through regional health literacy conference
Partner with Central City Concern and other health and community organizations to address the challenges in affordable housing, homelessness and health care	Number of completed affordable housing units/projects
Provide workforce training and college scholarships through YES Program and other career-focused efforts to support ethnically diverse youth entering health careers	Number of ethnically diverse students entering health care careers through YES Program, and number of high school internships, job shadows
Financial support to provide labor resources to education and community-based programs focused on healthy lifestyle, educational attainment and career readiness	School district graduation rates and youth reached through community- and school-based programs

Legacy Health Community Resources

Legacy Health recognizes the power of collaboration. Exchanging knowledge, skills and experiences with our community organizations helps us achieve more together than we would separately. Legacy Health has identified the following resources in our communities to partner with and better address the priority needs in our area.

Organizations	Priority need(s) addressed*
Adventist Health	Funding/collaborative partner
Albertina Kerr	AC, BH
All Hands Raised	SD
AWARE Food Bank	SD
Basic Rights Oregon	AC, BH, SD
Battleground Healthcare	AC
Birch Community Services	SD
Boys and Girls Club of SW Washington	BH
Bradley Angle	SD
Canby St. Vincent De Paul	SD
Cascadia Behavioral Health	BH
Central City Concern	AC, BH, SD
Children's Center	BH, SD
Children's Community Clinic	AC
Clark County Food Bank	SD
Coalition of Communities of Color	SD
Columbia Pacific Food Bank	SD
Columbia River Mental Health Foundation	BH
Community Action of Washington County	AC, SD
Compassion Connect	AC, SD
Council for the Homeless	SD
Daybreak Youth Services	BH
De Paul Treatment Center	BH
Ecumenical Ministries of Oregon	SD
Familias en Acción	AC, SD
Farmworkers Housing Development Corporation	SD
FolkTime, Inc.	BH
Free Clinic of SW Washington	AC, SD
Friendly House	AC
Girls on the Run-Portland Metro	SD
Girls, Inc.	SD
"I Have a Dream" Oregon	SD
Kaiser Permanente	Funding/collaborative partner
Latino Network	AC, SD

*Key: AC=Access to Care, BH=Behavioral Health, SD=Social Determinants of Health

(continued)

Organizations	Priority need(s) addressed*
Liberty House	AC, BH
Lifeworks NW	BH
Lift Urban Portland	SD
Meals on Wheels	SD
Mental Health Association of Oregon	BH
MIKE Program	SD
Momentum Alliance	SD
My Father's House	SD
NAMI Multnomah	BH
NAMI Oregon	BH
Native American Rehabilitation Association of the NW	AC
Native American Youth and Family Center	SD
New Avenues for Youth	AC, BH, SD
North by Northeast Community Health Center	AC
NorthStar	BH
Oregon Association of Minority Entrepreneurs	SD
Oregon Community Warehouse	AC
Oregon Health Care Interpreters Association	AC
Oregon Health & Science University	Funding/collaborative partner
Oregon Humanities	SD
Oregon Latino Health Coalition	SD
Oregon Public Health Institute	AC, SD
Outside In	AC, SD
Partners for a Hunger Free Oregon	SD
Partners In Diversity	SD
Project Access NOW	AC, SD
Q Center	AC
Rose Haven	BH, SD
Salem Health Foundation	AC
Salem/Keiser Coalition for Equality	SD
Salud Medical Center	AC
Sandy Community Action Center	SD
Share, Inc.	SD
Silverton Area Community Aid, Inc.	SD
Snowcap	SD
Southwest Community Health Center	AC
Southwest Washington Regional Health Alliance	SD
The Intertwine Alliance Foundation	BH

*Key: AC=Access to Care, BH=Behavioral Health, SD=Social Determinants of Health

(continued)

Organizations	Priority need(s) addressed*
The Skanner Foundation	SD
The Wallace Medical Concern	AC
TransActive Gender Center	AC
Transition Projects	SD
Trillium Family Services	BH
Urban League of Portland	SD
Vietnamese Community of Clark County	SD
Virginia Garcia Memorial Foundation	AC
Washington State University Foundation	SD
West Linn Food Pantry	SD

*Key: AC=Access to Care, BH=Behavioral Health, SD=Social Determinants of Health



Legacy Health

1919 N.W. Lovejoy St. • Portland, OR 97209
www.legacyhealth.org



MAC-5052-MH/MC ©2018

EMANUEL Medical Center | GOOD SAMARITAN Medical Center | MERIDIAN PARK Medical Center | MOUNT HOOD Medical Center | SALMON CREEK Medical Center | SILVERTON Medical Center

RANDALL CHILDREN'S HOSPITAL Legacy Emanuel | LEGACY MEDICAL GROUP | LEGACY HEALTH PARTNERS | LEGACY HOSPICE | LEGACY LABORATORY | LEGACY RESEARCH

Partners in transforming care · CARES Northwest · Legacy-GoHealth Urgent Care · Legacy-United Surgical Partners · PacificSource Health Plans · Unity Center for Behavioral Health