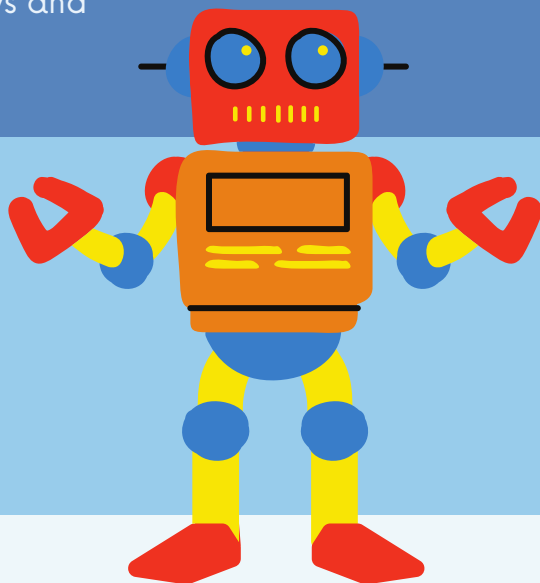


# HOLIDAY TOY DONATIONS

As part of the family-centered care offered at Randall Children's Hospital at Legacy Emanuel, we strive to help children feel comfortable and relaxed while they are in the hospital. Kids who are hospitalized throughout the year receive toys, books or craft projects and other activities to lift their spirits. This means we go through a lot of toys and always need help replenishing our stock.

## DONATION DROP-OFF

For your convenience, we have a large donation bin at the outside entrance of Randall Children's Hospital. Donation receipts are available on the bin and can be deposited with your new toy/activity donation.



## TOY DRIVE-THRU

If you would like to make your donation in-person, we're offering two drive-thru toy drives.

**Saturday, December 10** from 10 a.m.-3 p.m.

**Saturday, December 17** from 10 a.m.-3 p.m.

On these days, donors will drive past the main entrance to a donation tent. Donors can remain in their vehicles.

If you anticipate donating more than one car load of toys, please contact us at least one week prior to donation. If you are unable to participate in one of our toy drive-thru dates and cannot use our drop-off bin, please contact us to discuss alternate options.

Due to ongoing COVID-19 restrictions, access to hospital buildings is strictly limited to patients and families only. Please take any photos of your donation prior to arriving. Groups will not be allowed to gather indoors or outdoors.



**RANDALL CHILDREN'S  
HOSPITAL**  
LEGACY EMANUEL



[childlife@lhs.org](mailto:childlife@lhs.org)



503-413-1370

For more information, please visit us online: [legacyhealthgiving.org/toydrive](https://legacyhealthgiving.org/toydrive)